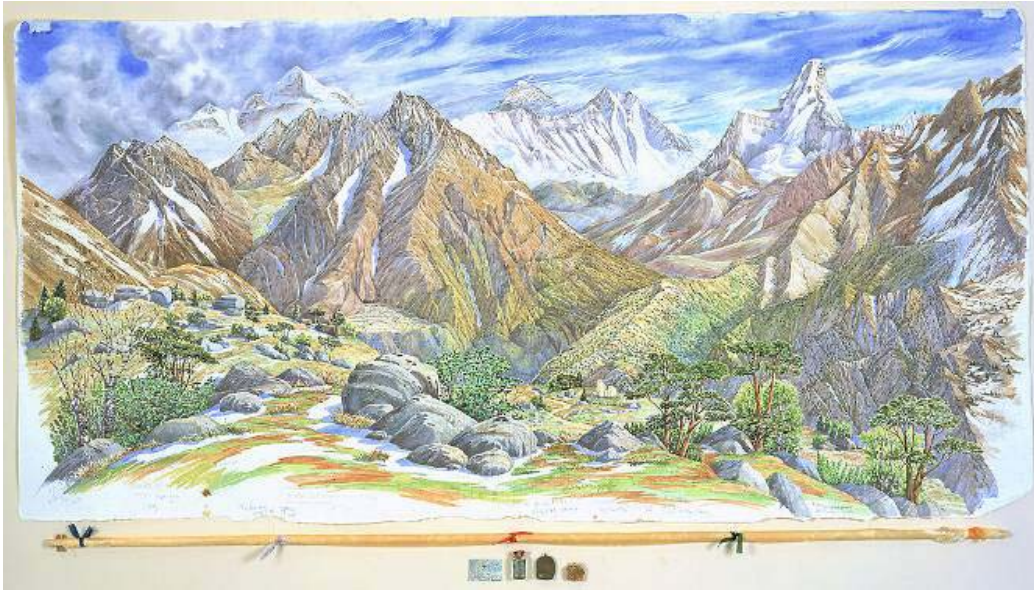


**Gerald Peters Gallery Presents
The work of Painter/Explorer**

***Tony Foster:
Searching for a Bigger Subject
Watercolour Diaries from Everest and the Grand Canyon***



From Kala Pattar 17800' looking E to Everest. April 26 2006. With AP. Breakfast in low cloud and -10_ before climbing slowly up from Gorak Shep. Breathless at 17800' I sit in wind & snow to work while AP shelters behind a rock. Everest partly concealed by a snow spume is a forbidding & awe-inspiring sight. Clouds move in and we retreat, shivering, to Gorak Shep.

Tony

Foster, Everest, 2006

FOR IMMEDIATE RELEASE

Santa Fe, NM, July 19, 2008 – The Gerald Peters Gallery, Santa Fe, is pleased to announce an autumn exhibition of approximately 35 watercolours by master watercolourist Tony Foster. The exhibition, *Searching for a Bigger Subject, Watercolour Diaries From Everest and the Grand Canyon*, opens on Friday, September 12 with a free gallery reception from 5:00 to 7:00pm and runs through November 15. The artist will give free lecture on Wednesday, September 10 at 5:30pm at the gallery

British artist Tony Foster makes epic paintings from epic landscapes. The world's mountains, canyons, volcanoes, icebergs, swamps, rainforests, rivers and deserts

are his inspiration. He has traveled from the Grand Canyon to Everest, Greenland to Honduras, the Maldives to Bolivia and Costa Rica to Hawaii in search of the Sublime. He is both artist and explorer, spending many months at a time in the field, a modern pioneer-painter with an ambitious, exacting quest to find the perfect viewpoint from which to recreate on paper the impossibly huge landscapes before him. Foster makes his paintings – through hours of labor – in the environments that inspire him, enduring the extremes of high, remote and dangerous, inaccessible places. The events and finds of the search are integral to the painting itself.

The focus of the show are his large-scale 6' x 3' paintings of the Grand Canyon and Mt Everest, made over the last five years when Foster began to evolve bigger works made in more challenging situations. These paintings - as with Foster's other work - intensive research, living and working on location, engaging with local and indigenous communities and promoting the cause for protection of wilderness places. The paintings are annotated with journal entries, short narratives, found artifacts and geological, floral, faunal and historical evidence.

During three expeditions Foster has painted all of Everest's three formidable faces – the only painter known to have done this - lashing his enormous drawing board to the rocks against the winds and battling frozen paint water and cracked paper after journeying through Nepal during a time of high military alert. One of his Everest paintings is thought to be the highest ever made - at 17800' - but left its toll as Foster suffered acute mountain sickness.

Foster's explorations of the Grand Canyon began over twenty years ago culminating in the sixteen day walk of the South Rim to find the perfect panorama followed by eleven days of painting. He has made ten expeditions to the Canyon and hiked over 500 miles on its trails from the rims to the river often in the company of people such as Bill Brace, the noted geologist or the writer Annie Vanderbilt.

It is Foster's belief that despite a image-overloaded world, some places still retain the power to inspire a sense of awe of wonder and in choosing to work in such iconic places as the Grand Canyon and Everest his 'intention is to promote the concept of the primacy of the subject'.

A major 324pp (13.5" x 12") colour publication, *Painting at the Edge of the World* accompanies the exhibition. With a Foreword by Robert Kennedy Jr, the book documents Foster's twenty-five year career and is launched to coincide with the exhibition, *Searching for A Bigger Subject*. .

Tony Foster was also the subject of a documentary, *The Man Who Painted Everest* (59') broadcast on Sky Television in 2006 and was awarded the Cherry Kearton Medal by the Royal Geographical Society in 2001.

Searching for a Bigger Subject opened in England at the Royal Cornwall Museum, then traveled to The Royal Watercolour Society in London

After Gerald Peters Gallery in Santa Fe, New York, Dallas the exhibit will open at The Phoenix Art Museum June 2009.